



K S GROUP OF INSTITUTIONS
K S SCHOOL OF ENGINEERING AND MANAGEMENT
DEPARTMENT OF CIVIL ENGINEERING
Industrial visit to Shivanasamudra hydro & solar
power plant, Mandya (Dist.) Karnataka

Date : 4th Jan 2024

Time : 7.30AM to 6.30PM

Venue : Shivanasamudra hydro & solar power plant, Mandya
(Dist.) Karnataka

Target Participants : UG students (3rd and 7th semester)

Outcome of the program:

The Department of Civil Engineering , K S School of Engineering and management has organized an Industrial visit to “Shivanasamudra hydro & solar power plant, Mandya (Dist.) Karnataka on 04.01.2024 (Thursday).The Shivanasamudra hydro & Solar power plant, Mandya (Dist.) Karnataka is the first-of-its- kind in Asia. The Shivanasamudra hydro was established in 1902, as a Government of Karnataka Electric power plant. The Shivanasamudra hydroelectric station has generation capacity of 42 MW. The Shimsha hydel power station has a generation capacity of 17.2 MW. The Shivanasamudra solar power plant has a generation capacity of 10MW. The Cauvery Hydro Electric power plant has a generation capacity of 3MW. The solar power plant technician had guided the student’s throughout the visit by taking the students into various section of industry

Solar Power Plant:

Shivanasamudra solar power plant is under the maintenance of BHEL (Bharat Heavy Electrical Pvt.Ltd) under Government of Karnataka Power Corporation. It is a 10MW solar power plant which have further divided into 3 parks with capacity of 3.5MW,1.5MW,5MW and all are linked to a common power station (control station) using SCADA supervisory

and cloud they are operated effectively.

Initial cost of this plant is around 75 crores estimated by Eversun Energy Pvt Ltd. The technician explained the various sections of the industry such as Solar panels set up area, Inverter Module sections, SCADA module sections and Maintenance section.

Cauvery Hydro Power Plant:

We also visited the Cauvery hydroelectric power plant which is very closer to Shivanasamudra hydro & solar power plant. This plant is Karnataka first low head hydroelectric power plant (8 metre) which is established in 1996 with a generating capacity of 3 MW power. In which the plant engineer explained about the turbines, generators and the control mechanism of power plant.

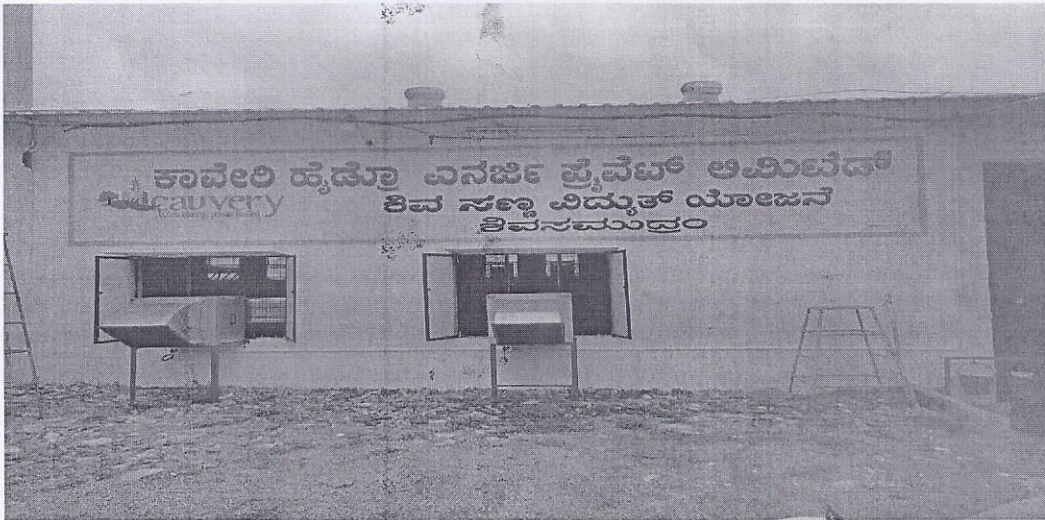
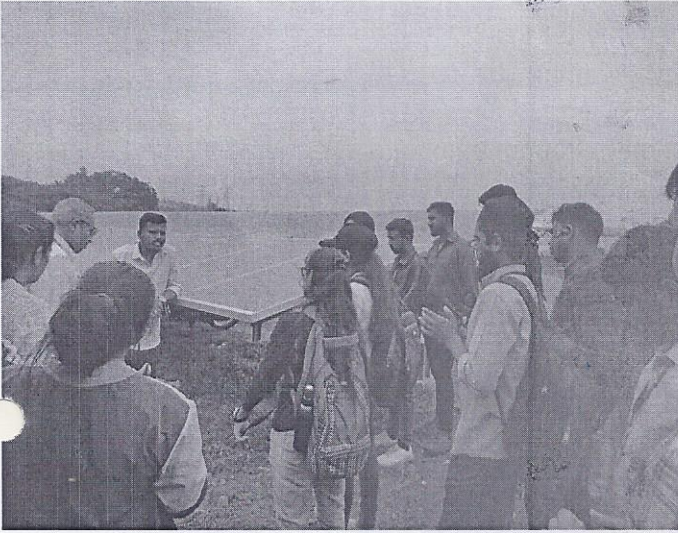
Faculties visited to Shivanasamudra hydro & solar power plant, Mandya (Dist.) Karnataka

Mr Veerendra Kumar, Asso. Prof, Department of Civil, KSSEM.

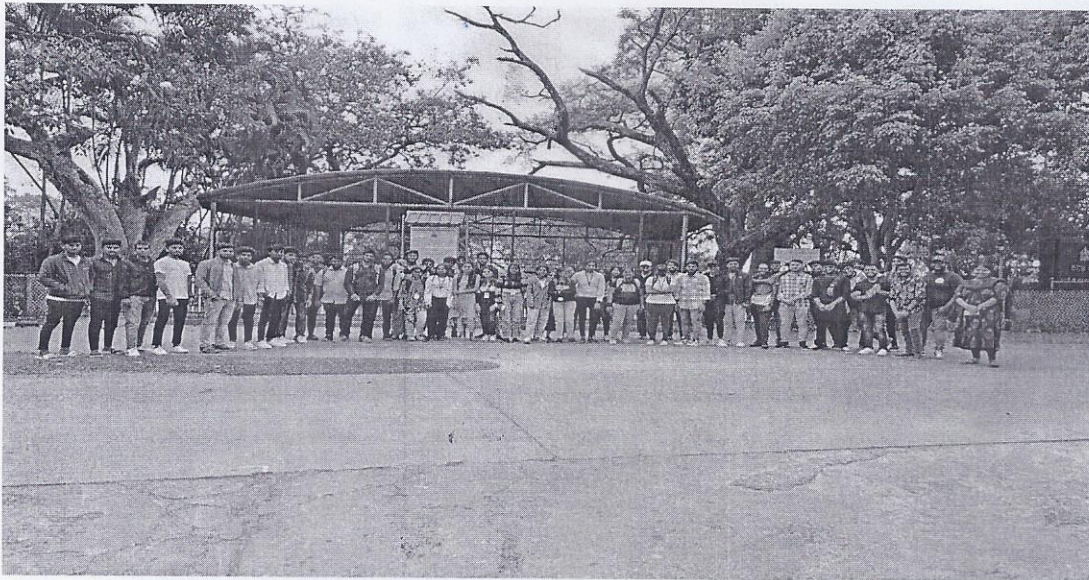
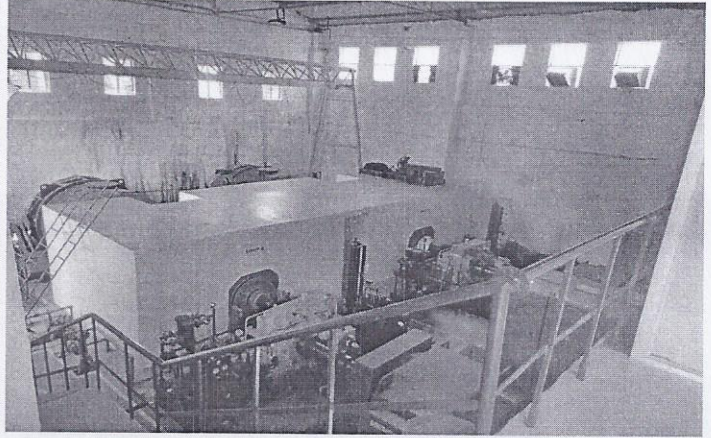
Dr Rashmi H R, Asso. Prof, Department of Civil, KSSEM.

Mrs Pallavi M, Asst. Prof, Department of Civil, KSSEM.

Photographs



Prof. Dr. H. S. ...
Dept. of Civil Engineering
K. S. Group of Institutions
K. S. School of Engineering & Management
Bangalore-560 082



M. K. Kelle

Head of the Department

Professor & Head
Dept. of Civil Engineering
K.S. Group of Institutions
K.S. School of Engineering & Management
Bangalore-560 062.